



The background of the slide is a dark, textured surface covered with various mathematical and scientific formulas in a light green, monospace-style font. These formulas include algebraic equations like $a^2 - x^2 = \frac{\pi a^2}{4}$, $x^2 - 4x + 5 \leq 5$, and $4\frac{10}{15} - 4\frac{2}{5} + 5\frac{1}{3} = \frac{(15 \times 4) + 10}{15}$; geometric formulas like $A = \pi r^2 h$ and $\lambda = \frac{2\ell}{n}$; and chemical equations like $2Cr(OH)_4^- + 2OH^- + 3H_2O_2 \rightarrow 2CrO_4^{2-} + 4H_2O + 2H_2O$. On the left side, there is a 3D rendering of a humanoid robot with a white, sleek body and a transparent head revealing internal mechanical and electronic components. The robot is shown from the waist up, facing right, with its arms crossed. In the top right corner, the WebOsmotic logo is visible, consisting of a stylized 'W' inside a circle followed by the text 'WebOsmotic PRIVATE LIMITED'. At the bottom right, the website address 'www.webosmotic.com' is displayed in a white, sans-serif font.

A promotional banner for AI Applications. On the left, a white humanoid robot with a glowing blue eye and internal mechanical details is shown in profile, looking towards the right. The background is a dark teal color filled with various mathematical formulas, including algebraic equations like $a^2 - x^2 = \frac{\pi a^2}{4}$, $x^2 - 4x + 5 \leq 5$, and $x^2 - 4x \leq 0$; geometric formulas like $A = \pi r^2 h$ and $\lambda = \frac{2\ell}{n}$; and chemical equations like $2Cr(OH)_4 + 2OH^- + 2CO_3^{2-} + 3H_2O_2 \rightarrow 2CO_3^{2-} + 2H_2O + 2H_2O$. The text 'AI Applications' is written in a large, bold, yellow font, and 'SHOWCASE' is in a large, bold, white font. Below this, the tagline 'Empowering Businesses with AI Innovations' is written in a smaller, white font. In the top right corner, the WebOsmotic Private Limited logo is visible, and in the bottom right corner, the website address 'www.webosmotic.com' is displayed.

A promotional banner for AI Applications. On the left, a white humanoid robot with a glowing blue eye and internal mechanical details is shown in profile, looking towards the right. The background is dark and filled with various mathematical and scientific formulas in a light blue/grey color, including $E=mc^2$, $f(x) \leq 5$, $\sqrt{a^2-x^2}$, and chemical equations like $2Cr(OH)_4 + 2OH^- + 2O_2 \rightarrow 2CrO_4^{2-} + 4H_2O$. The text 'AI Applications' is in a large, bold, yellow font, and 'SHOWCASE' is in a large, bold, white font. Below this, the tagline 'Empowering Businesses with AI Innovations' is written in a smaller white font. In the top right corner, the 'WebOsmotic PRIVATE LIMITED' logo is visible. In the bottom right corner, the website 'www.webosmotic.com' is listed.

Transforming Ideas into Exceptional Digital Products



About Us

Since 2010, Webosmotic has been redefining innovation with 15+ years of excellence in IT solutions with :

- 400+ happy clients
- 850+ successfully delivered projects
- Dedicated team of over 100 experts
- 92% client retention rate.

From startups to global enterprises, our commitment to quality and client satisfaction drives transformative digital solutions, making Webosmotic a trusted technology partner worldwide.

www.webosmotic.com

From the CEO's desk

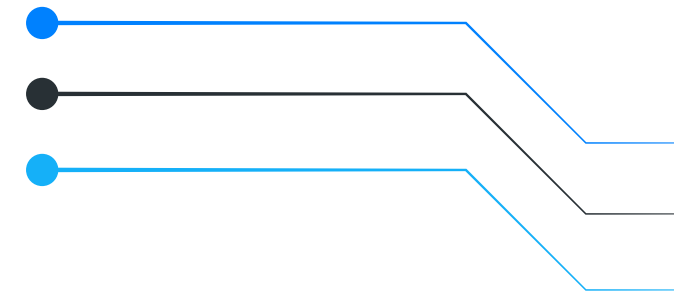
I believe technology should empower, not complicate. At WebOsmotic, my vision is to transform industries by delivering innovative, human-centric digital solutions.

By fostering trust, embracing emerging trends, and driving excellence, I aim to help businesses thrive in an ever-evolving world, setting new benchmarks for transformation and growth.

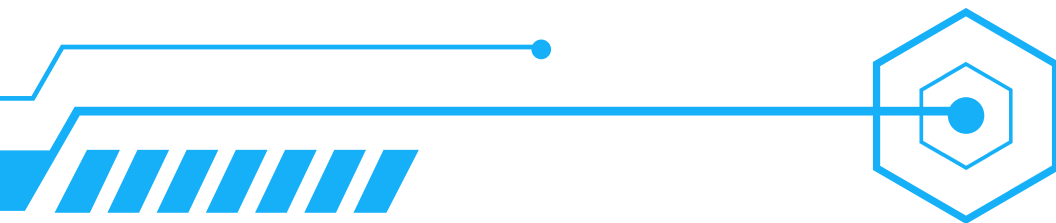
– Vipul Jain



1. Recruitment smart

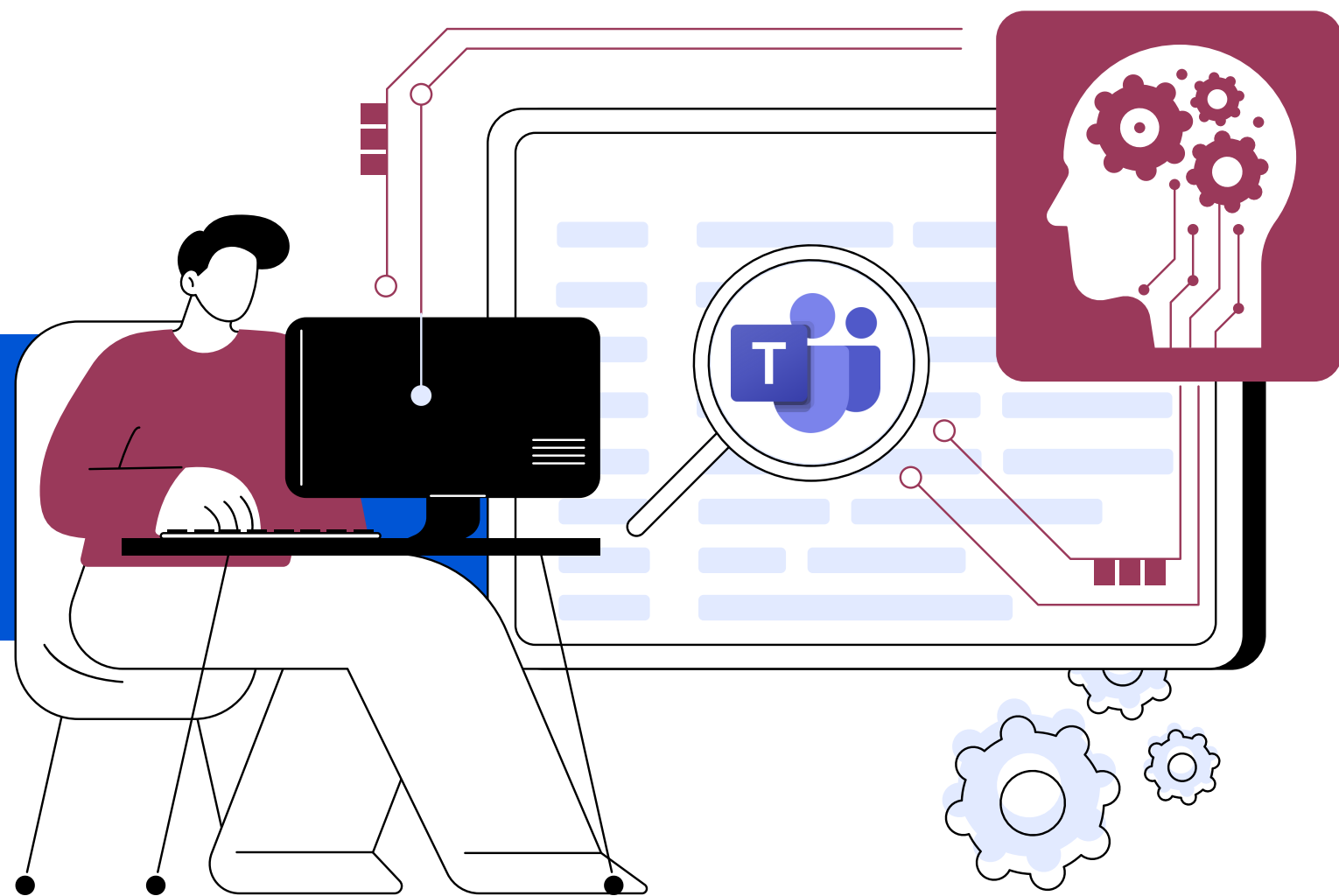


Recruitment **SMART**



Overview

An AI-driven recruitment platform that analyzes interviews, detects behavioral traits, and automates hiring workflows. Its **MS Teams Meeting Bot** processes media streams in real time to assess stress, confidence, and focus, using deep learning and computer vision for data-driven hiring insights.



TRY APP



- AI-Driven Behavioral Analysis
- Meeting Bot Integration
- Automated Hiring Workflows

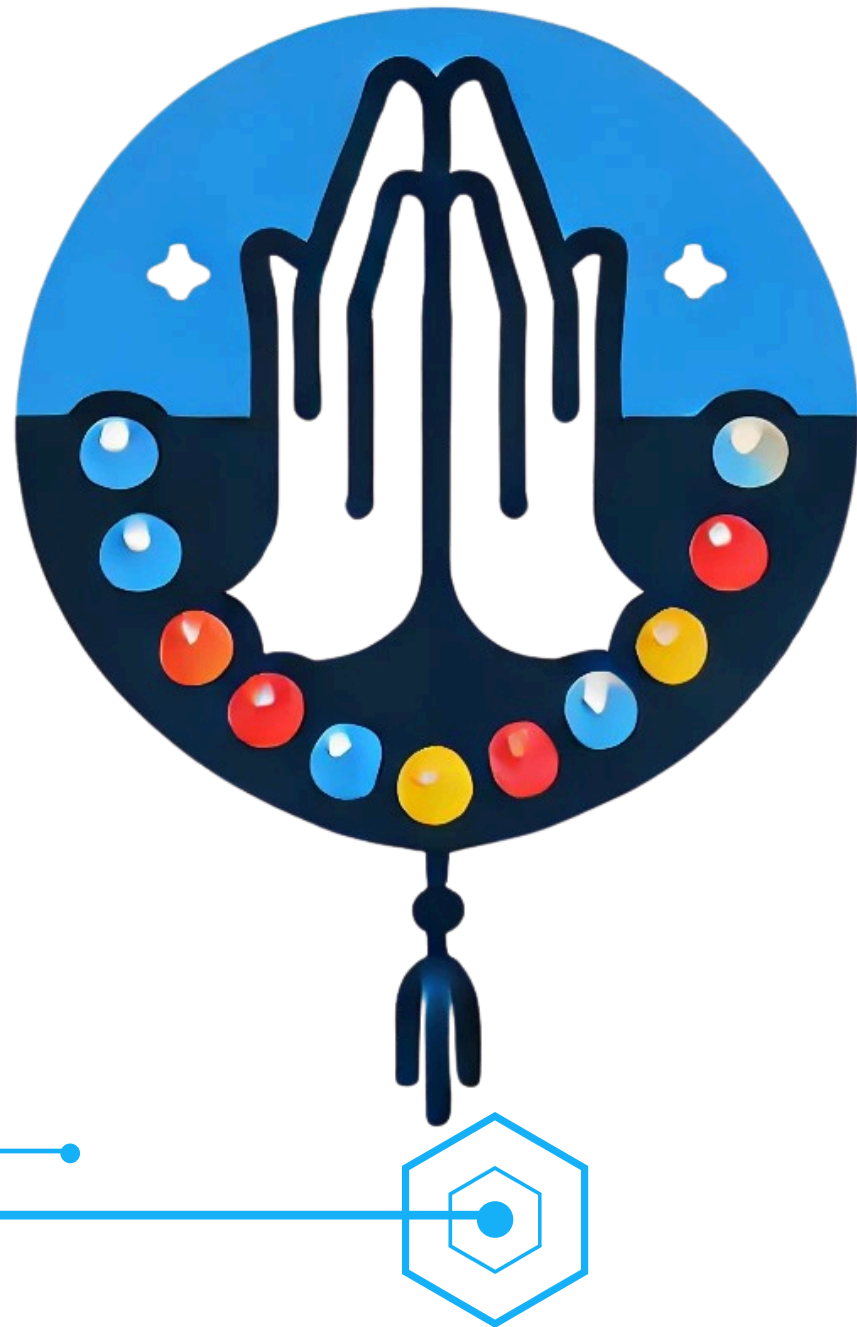
Tech Stack :

FastAPI, Deep Learning, Computer Vision, C#, React.js

Type :

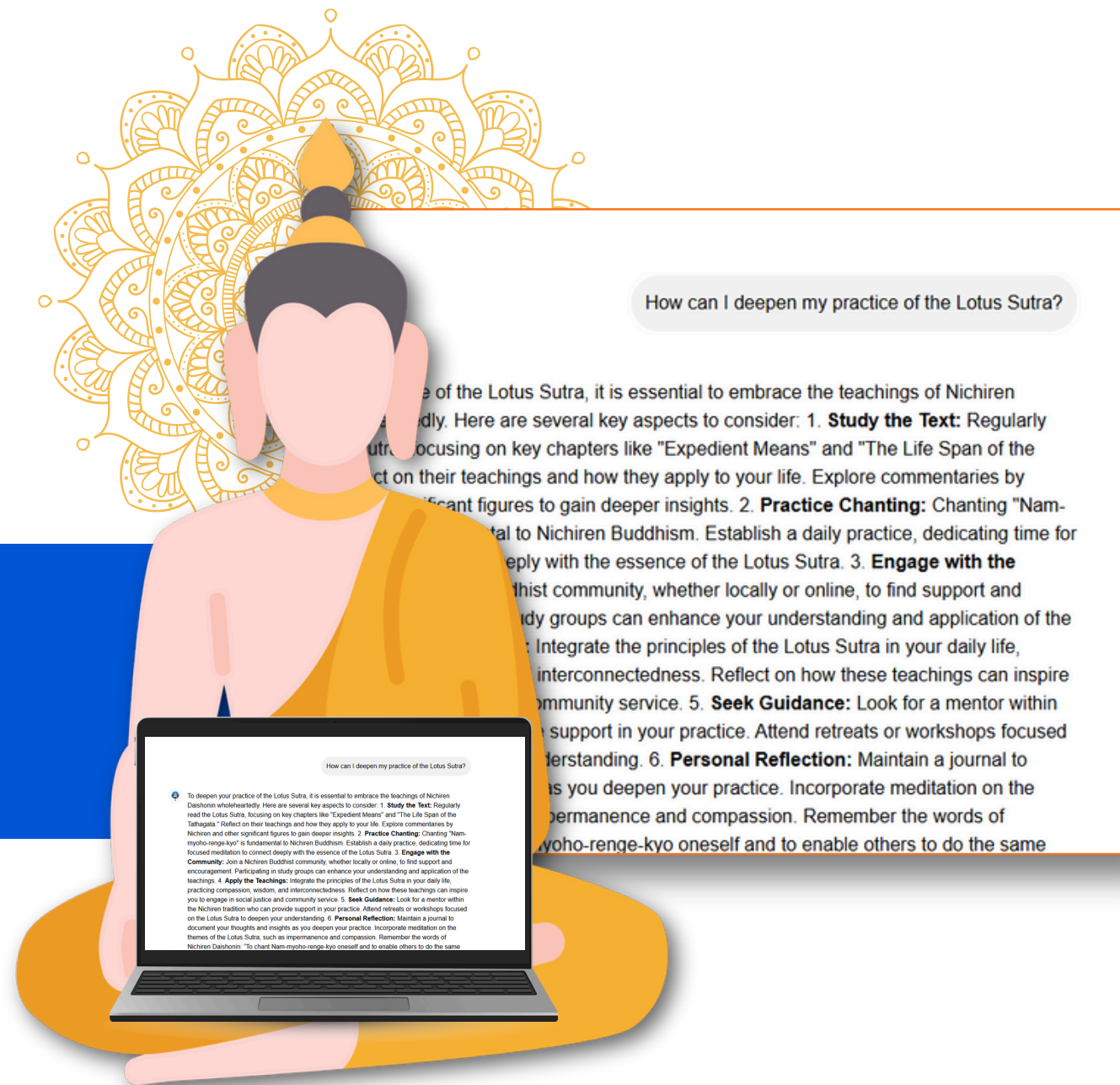
Web & MS Team Plugin Application

2. Nichiren GPT



Overview

Nichiren GPT is an AI-powered chatbot designed to provide insights into **Nichiren Buddhism** by answering questions based on the teachings and writings of **Nichiren Daishonin**, bringing centuries-old wisdom into the digital age.



- Personalized Guidance
- Conversational Approach
- Accessible Wisdom

Tech Stack :
LLM, Milvus VectorDB, React.js, Flask

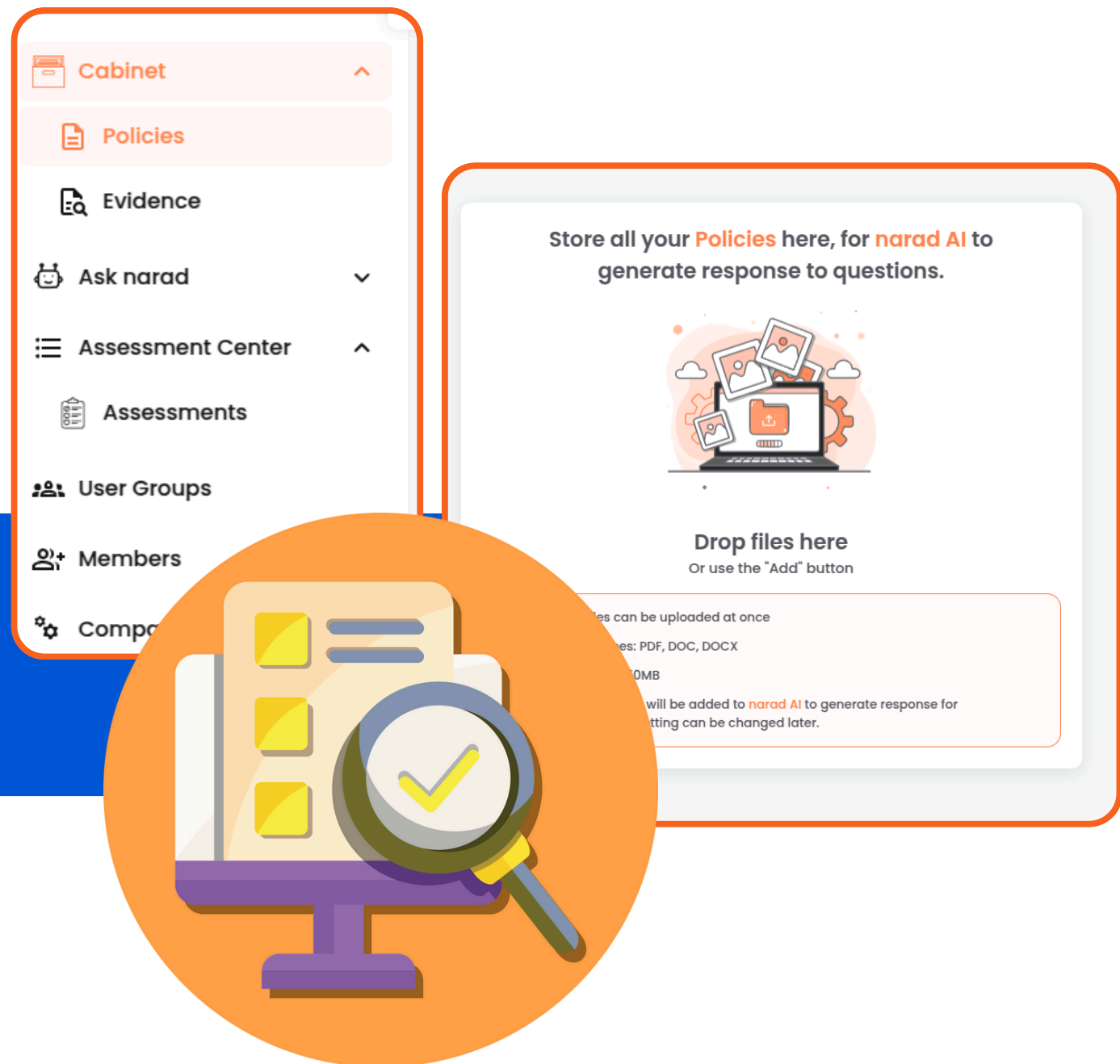
Type :
Web Application

3. Narad



Overview

Narad.io is an AI-powered platform that is designed to **simplify compliance** for businesses. It empowers compliance teams by providing instant answers to queries, automating time-consuming tasks like questionnaires, and offering actionable insights, helping teams stay compliant and efficient with ease.



- Resolve Queries in Real-Time
- Solve Complex Questionnaires
- Cited References

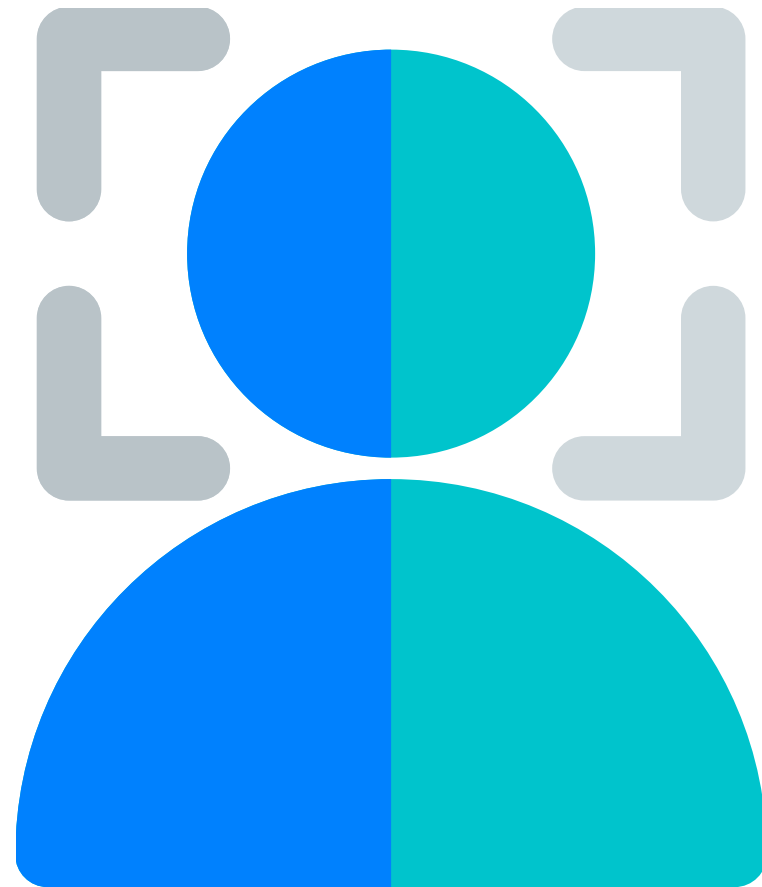
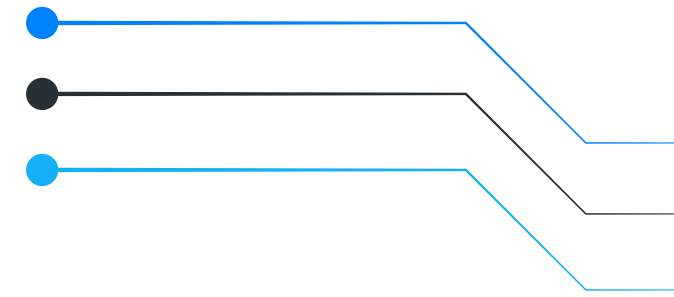
Tech Stack :

React.js, Node.js, Express.js, MongoDB, AWS, and Gen AI Model

Type :

Web Application

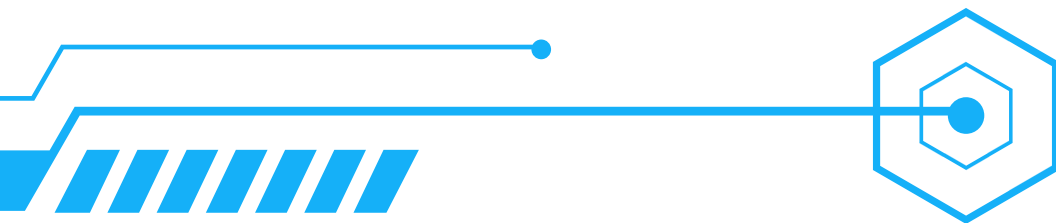
4. Facial Recognition Tool

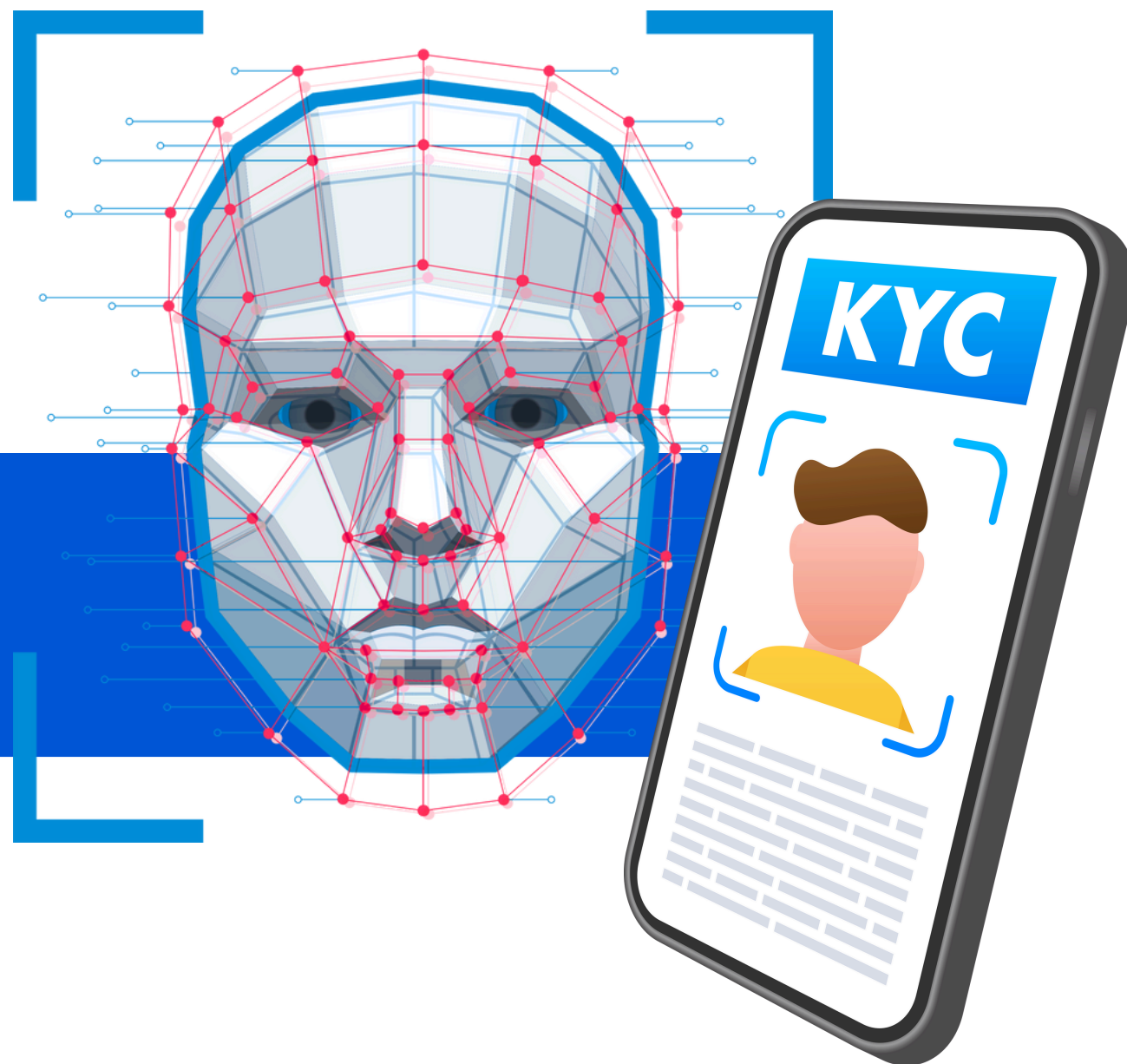


Overview

Our facial recognition tool simplifies and secures **identity verification** by scanning and storing facial data.

This eliminates the need for users to re-enter login credentials, providing a fast and seamless experience.





TRY APP



- Travel Security
- Access Control
- Fraud Prevention

Tech Stack :

OpenCV, Python, TensorFlow, Flask

Type :

Web Application

5. Food Detective



Overview

The Food Detective is an AI-powered app that **decodes food labels**, helping consumers make informed dietary choices.



- Dietary Compliance
- Allergen Detection
- Global Convenience

Tech Stack :

React.js, Python, Flask, TensorFlow, Google Gemini

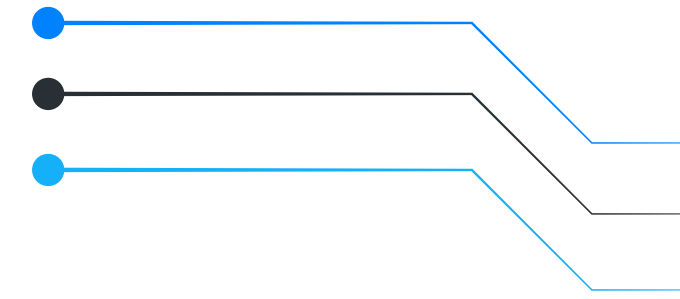
Type :

Mobile Application

Download Now

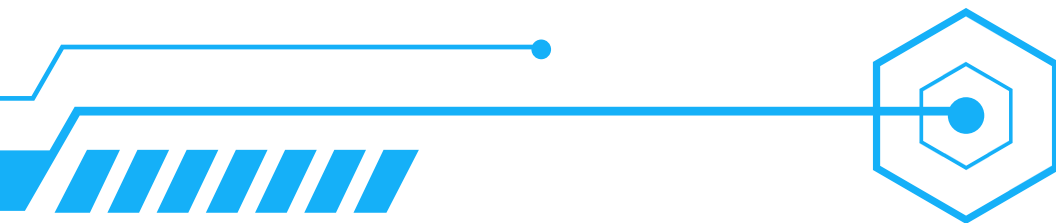


6. Personality Finder



Overview

Unlock the **secrets of handwriting** with this innovative app. Personality Finder uses handwriting analysis to provide insights into personality traits, communication styles, and emotional tendencies.





- Personalized Insights
- Communication Style Analysis
- Practical Applications

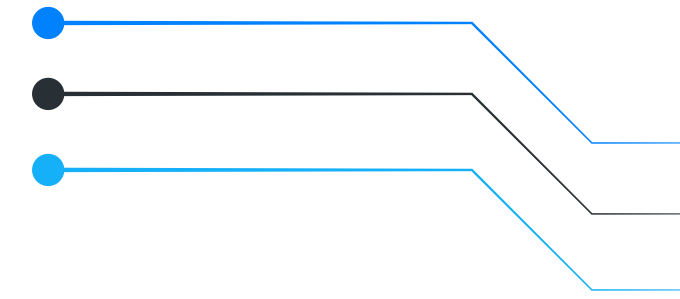
Tech Stack :
Machine Learning (SVM), LLM (Gemini)

Type :
Mobile Application

Download Now

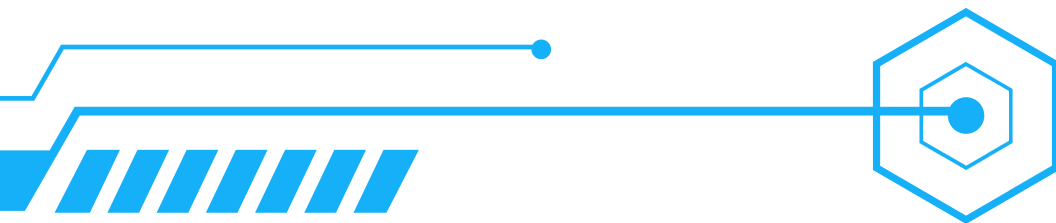


7. AI Quiz Generator



Overview

Transform any document into a source of customizable multiple-choice questions. This tool **simplifies assessments** and compliance training by generating high-quality, domain-specific quizzes.





TRY APP

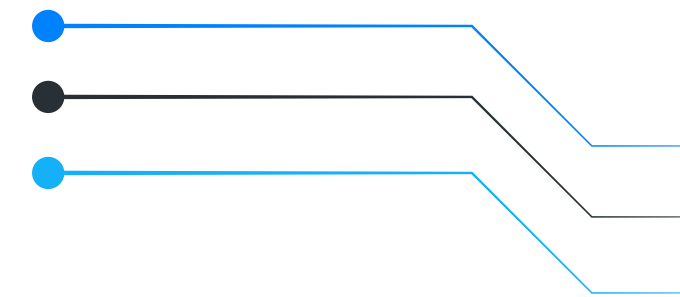


- Interactive Learning
- Effortless Compliance Checks
- Customizable Assessments

Tech Stack :
LLM (Gemini)

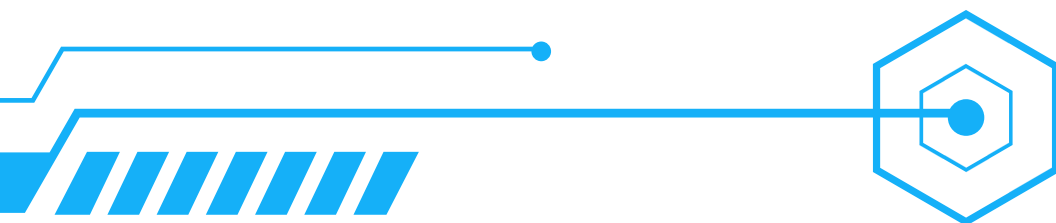
Type :
Web Application

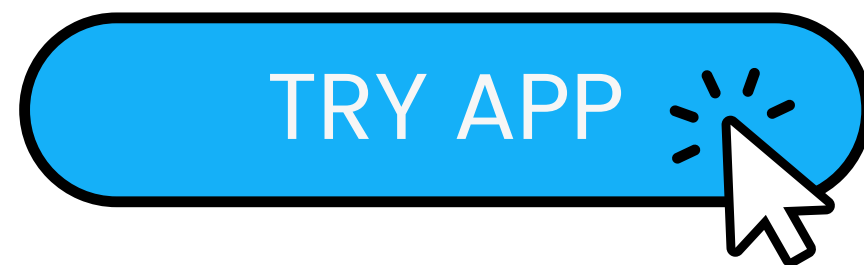
8. Resume Analyzer



Overview

The AI-powered Resume Analyzer by WebOsmotic streamlines recruitment by **automating resume screening**, enhancing efficiency and accuracy for HR professionals.





- Efficient Screening
- Accurate Matching
- Customizable Filters

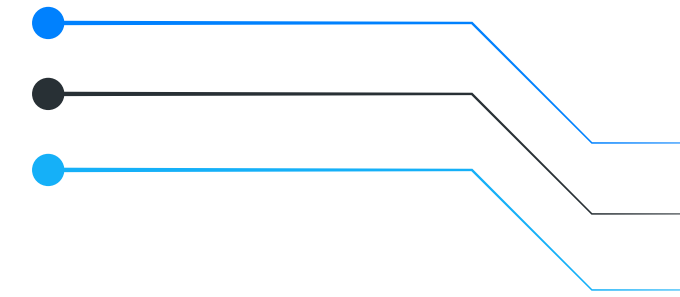
Tech Stack :

Python, Streamlit, Google Gemini

Type :

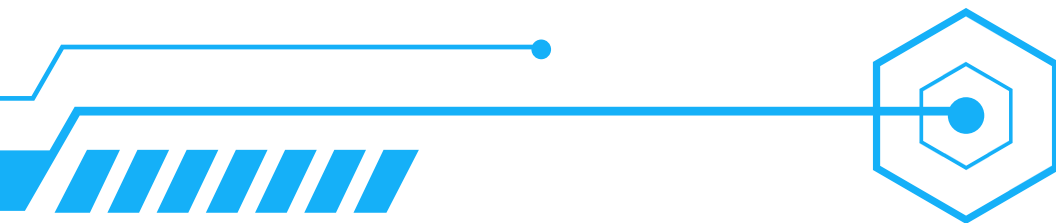
Web Application

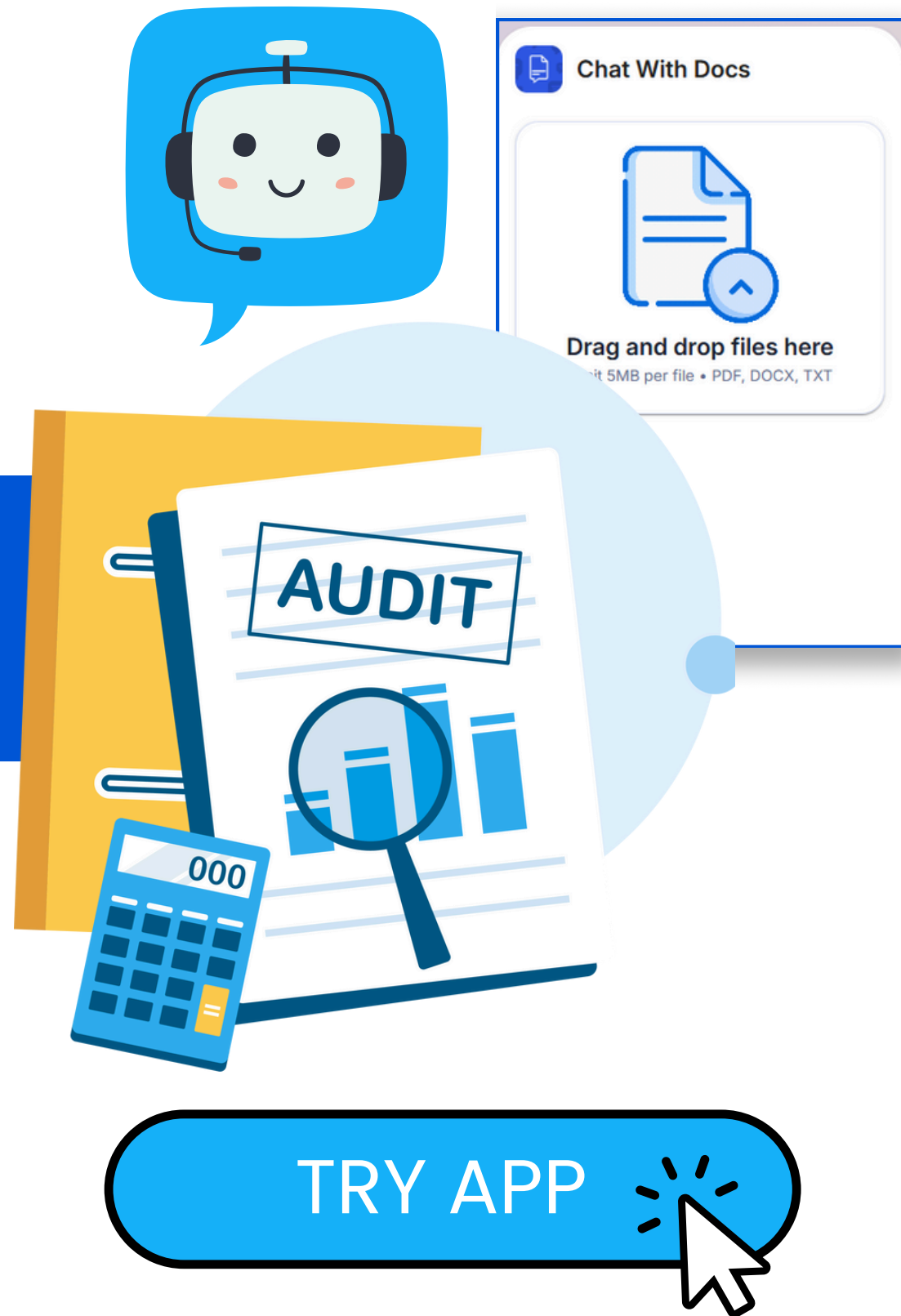
9. Chat with Docs



Overview

Imagine having a personal assistant that can **instantly retrieve information** from your private documents just by asking a question. With AI chatbots trained on your own set of docs, this is now possible.





- Research Assistance
- Interactive Guides
- Automated Customer Support

Tech Stack :
LLM (Gemini), RAG (Langchain, Faiss)

Type :
Web Application



Stay ahead

Take smarter decisions with AI

[Book free consultation now](#)